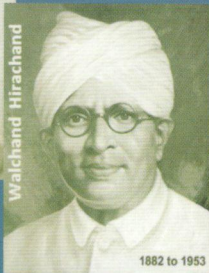


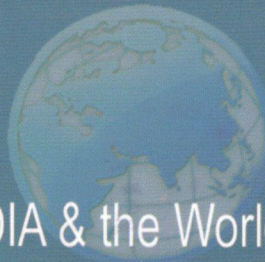


Brochure 2014-15



Walchand Hirachand

1882 to 1953



Serving INDIA & the World since 1947

**WALCHAND COLLEGE OF ENGINEERING**

*An Autonomous Institute Approved by AICTE*





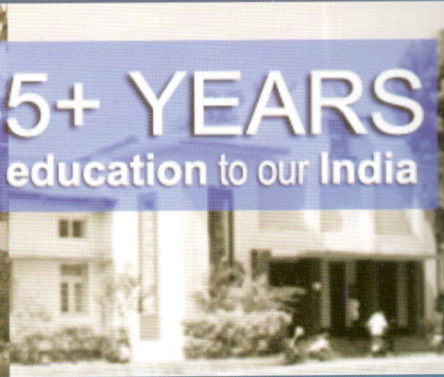
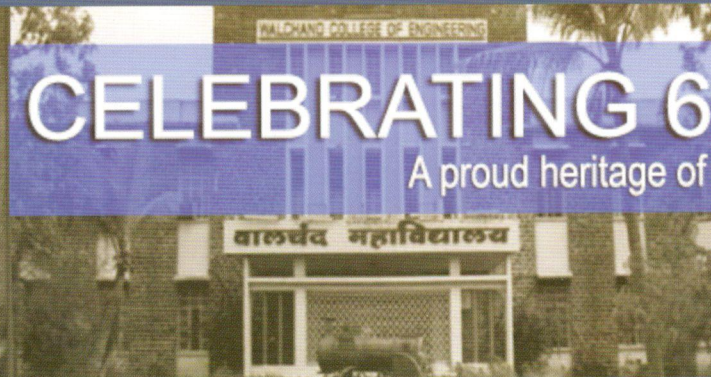
# Glimpse of WCE





# CELEBRATING 65+ YEARS

A proud heritage of education to our India



## WCE at Glance

- **1947** - Established on 23<sup>rd</sup> June 1947 as: New Engineering College, Sangli
  - One of the oldest engineering colleges in the state of Maharashtra.
  - Founder Late Shri D. K. Sathe, popularly known as Dhondumama Sathe
- **1955** - Name changed to: Walchand College of Engineering
- **1956** - Management of the College handed over to Administrative Council
- **1977** - Started receiving 90% Grant in Aid from Government of Maharashtra
- **2007** - Institute became Autonomous

## VISION

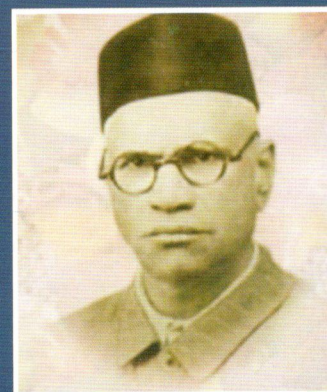
- To produce capable graduate engineers with an aptitude for research and leadership

## MISSION

- To impart quality education through demanding academic programmes.
- To enhance career opportunities for students through exposure to industry.
- To promote excellence by encouraging creativity, critical thinking and discipline.
- To inculcate sensitivity toward society and a respect for the environment

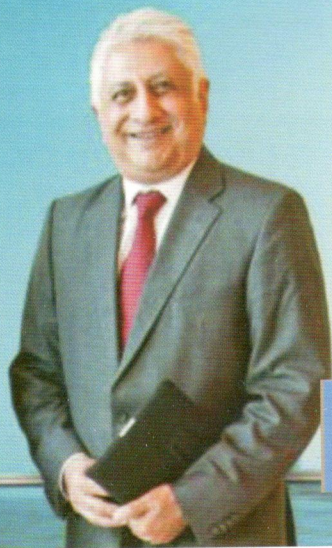
## OBJECTIVES

- To achieve excellence in learning and research through continual improvement in both content and delivery of the academic programmes.
- To promote close interaction among industry, faculty and students to enrich the learning process and enhance career opportunities for students.
- To develop state - of - the - art laboratories and other infrastructure commensurate with the need of delivering quality education and research services.
- To strengthen the Institution through network of alumni and optimize use of resources by leveraging inter - departmental capabilities.
- To provide opportunities and ensure regular skill. Up - gradation of faculty and staff through structured training programmes



**Late Shri. Dhondumama Sathe**  
The Founder of Walchand College  
of Engineering





## AJIT GULABCHAND: OUR CHAIRMAN

### Shri Ajit Gulabchand – a leading industrialist is

- Chairman and Managing Director of Hindustan Construction Company Ltd. (HCC) one of the largest civil construction company in India. Under his leadership, the HCC has constructed 25% of India's hydro-electricity power, more than 50% of its nuclear power, some 34,000 kilometers of expressways and highways, and more than 320 bridges.
- A member of the Governor's Steering Board of the Infrastructure and Urban Development Community at World Economic Forum, Geneva
- Founder Member and Chairman of Disaster Resource Network India and a member of the Advisory Board of United Nations Disaster Risk Reduction – Private Sector Partnership
- Associated as director with various companies
- Actively involved in educational institutions and business associations
- Also keen follower and supporter of sports and a philanthropist having been associated with several private charitable trusts.

#### Board of Governors

Shri Ajit Gulabchand	Chairman
Ms. Shalaka Gulabchand	Member, Trust Nominee
Dr. V. N. Gupchup	Member, Trust Nominee
Shri C. N. Gandhi	Member, Trust Nominee
Shri R. P. Purohit	Member, Trust Nominee
Dr. U. N. Gaitonde	AICTE Nominee, Member
Dr. S. M. Karande	Shivaji University Nominee, Member
Dr. S. K. Mahajan	DTE, Maharashtra, Member
Shri R. Unnikrishnan	WRO, AICTE, Member
Dr. P. J. Kulkarni	Faculty representative
Dr. K. S. Wagh	Faculty representative
Dr. G. V. Parishwad	Director and Secretary

#### Key Functionaries

Dr. G. V. Parishwad	Director
Dr. P. J. Kulkarni	Deputy Director
Prof. S. N. Kore	Dean - Academics
Prof. S. B. Dhaygude	Dean – TPO, Industry Inst. & Alumni Interactions
Dr. G.R. Munawalli	Dean - RDQA
Dr. K.S. Wagh	Dean - Faculty
Dr. U. A. Dabade	Dean - Students
Dr. M. M. Waware	Controller of Exams
Dr. P. G. Sonavane	Dean - Planning
Shri. R. G. Bhosale	I/C Vice Principal (Polytechnic)
Dr. S .A. N. Inamdar	Librarian



## Diploma and UG Programs

SN	Branch	Starting Year & Current Intake			
		UG		Diploma	
1	Civil Engineering	1947	60	1955	40
2	Electrical Engineering	1955	60	1955	60
3	Mechanical Engineering	1955	60	1955	60
4	Electronics Engineering	1986	60	1970	40
5	Computer Sci. Engineering	1986	90	--	--
6	Information Technology	2001	60	--	--
<b>Total First-Year-Intake</b>			390		200

## PG Programs

SN	Start Year	PG Program	Start Intake	Current Intake
1	1971	Civil – Structural Engineering	6	30
2	1971	Civil – Environmental Engineering	6	18
3	1971	Mechanical – Design Engineering	6	30
4	1971	Mechanical – Heat Power Engineering	6	18
5	1971	Electrical – Power Engineering	6	18
6	1971	Electrical – Control Systems	6	18
7	1987	Electronics Engineering	18	30
8	1995	Mechanical – Production Engineering	6	30
9	1998	CSE - Computer Science and Engg.	18	30
10	2012	CSE - Information Technology	18	18
<b>Total Intake</b>			<b>96</b>	<b>240</b>

## Ph.D. Programs

- Recognized Research Center of Shivaji University, Kolhapur in all the disciplines Engineering since 1971
- It is also recognized as QIP centre of central government with two PhD seats for each Branch (except IT) from 2012 (Total 10)



## Institute Achievement

- UG & PG programs accredited by the National Board of Accreditation (NBA)
- The autonomous status, first awarded to the college in 2007 was extended for a term of 6 years till 2017-18.
- Curriculum revamp was undertaken in 2012 with the help of national & international academic experts.
- Participated in the "World Bank Funded" Government of India Scheme 'TEQIP' Phase-II. The performance of the college at state level got ranked as outstanding.
- As per 'Outlook 2012-13 survey ranked as one of the best colleges in India.

## Faculty Achievements

- Best teacher award for Prof. P. J. Kulkarni by Maharashtra state Govt.
- Best teacher award for Prof. M. Y. Khire by Maharashtra state Govt.
- Young Scientist Women award under SERC Fast Track for Dr. S. H. Bhandari by DST, New Delhi
- Young Scientist award for Prof. U. A. Dabade & M.M. Khot under SERC Fast Track by DST, New Delhi
- Ongoing RPS projects awarded to Dr. B.F. Momin, Dr. Mrs. S.P. Sonawane, Mrs. S. Diwan, Mrs. Dr. A.A. Agashe.

## Patents Awarded & Filed

Sr. No.	Title	Name of Faculty	Application No.	Application Filing Date
1	Technique for generating a mother wavelet from the Speech signal for evaluation of wavelet transform to capture time variations in speech signal Indian Patent	Dr. Mrs. S. D. Apte	123/MUM/2002/3402	Patent Awarded on 25- 08-2006
2	Method and device for regulating and changing the compression ratio, valve timing of an internal combustion engine	Mr. D. D. Ladi (UG Student) & Dr.S.P.Chavan	565/MUM/2006	Patent Awarded on 10- 04-2007
3	Design and Development of 1 TR Vapour Adsorption Air Cooling System for Truck Cabin using Heat from Engine Exhaust	Dr. G.V. Parishwad,& Mr. Harish Tiwari	2752/MUM/2011	29.09.2011
4	Method and apparatus for analysis of roughness quality of flat metal surface by image processing	Dr. K.H. Inamdar	624/MUM/2012	09.03.2012
5	An Instant Potable and Compact Cooling System working on Multiple Heat Sources	Dr. G.V. Parishwad,& Mr. Harish Tiwari	768/MUM/2012	22.3.2012
6	Process for image authorization authentication and integrity check.	Mrs. S.P. Sonavane	1120/MUM/2012	09.04.2012
7	A System and Method for Detecting Unbalance in a rigid rotor Using a Dynamic Balancing Machine	Dr, Y. V. Joshi & Mr. N.G. Apte	300MUM/2013	01.02.2013
8	An innovative method for Heating water by using PTFE coat or the like	Mr. S.V. Ramchandre	1521/MUN/2014	01.05.2014
9	A System for Turning Vehicle with Minimum Turning Radios	Dr. S.P. Chavan	3250/MUM/2014	13.10.2014



## WCE Strengths

- 67 years of excellent standing, including 43 years of imparting quality technical education at PG and doctoral research.
- Among top 5 most preferred engineering institutes in the state by students
- Visionary leadership of Administrative Council
- Became Autonomous in 2007
- Successfully implemented TEQIP-I, performance ranked #2 at national level impact study.
- Progressing well in TEQIP-II in strengthening PG education and research
- Well qualified and dedicated faculty with aptitude for research.
- Most of the UG programs have five-year accreditation.
- Admissions of meritorious students at UG and PG level.
- World-Class library facilities for supporting academics and research & distance learning.
- Availability of land and space for growth - 92 acres of green campus.
- Established strong liaison with industries.
- Network of successful Alumni spread across the globe.
- Deployed MIS systems in all departments & wings catering for efficient paperless system.
- As per the admission Cut-off in 2014-15 Walchand college ranks fourth in Maharashtra
- One of the best facilities for 'Environment Protection Research' and consulting.

## Ajit Gulabchand Central Library

Title	Quantity
Books	100352
Print journals & Magazines	69 Indian, 12 Foreign
E- Journals	1060
Total No. of M.E. Dissertations	2016
Educational Video Cassettes	77
Microfiche	1700
Total No. of A.V. Cassette	19
Total No. of CD's /DVD's	3447
Library building carpet Area in sq.m.	4680.20

## Major MoU signed in last Five years

### With Industries

- Infosys
- TCS
- IBM
- Oracle
- TechMahindra
- John Deere
- Sandriver Technologies
- Kirloskar Brothers Ltd.
- Chitale Digital
- MPCB
- Sakal Foundation
- NASSCOM
- Tata Technologies

### With other Institutes

- IIT Mumbai
- COE, Pune
- VJTI, Mumbai
- SGGS, Nanded
- SPCOE, Mumbai
- DBATU, Lonere
- DJMIT, Anand

## Motivational initiatives

- Sponsorship to pursue higher studies at IIT's and IISc under QIP.
- A large number of faculty are encouraged to attend short term courses at premier institutes and abroad.
- Faculty sponsored to present research papers at conferences in India and abroad. Till now 14 Faculty members have visited foreign countries.
- Incentives for R&D, publications, patents to faculty and students
- Students are paid registration fees for papers published in conferences.
- **Ideal teacher awards** to one faculty each from degree and diploma every year with a cash prize of **Rs 15000/-** and **Rs.5000/-** to **Ideal Support Staff**.
- Regular skill upgrade and training opportunities for Support Staff



## Academic Reforms

### Flexibility in curriculum with:

- Introduction of interdisciplinary electives 2<sup>nd</sup> to 7<sup>th</sup> Semester from 2014-15
- Provision of option of full semester project work/ internship in 8<sup>th</sup> Semester
- Provision of option for one-semester credit transfer through Academic linkage with: IITs, NITs, COEP, VJTI, SPCOE, SGGSSIT, DBATU, Lonere, etc., and universities abroad to qualified students.
  - Enabling exposure to different learning environments (2 months internship or one semester coursework) and
  - Expand faculty network for academic and research collaboration.
- Restructuring two major semesters of 19 weeks with a summer term of 11 weeks for slow learners and students joined under exchange programmes.
- Introduction of German language Course

## Grants Received in last 5 years

Agency/Year	2009-10	2010-11	2011-12	2012-13	2013-14	Total
AICTE	13.45	-	75.73	18.2		107.38
DRDO	-	12.32	-	-		12.32
DST	3.4	18.65	22.95	-		45
MPCB	6.47	7.65	68.22	-		82.34
CDTP	10.22	7.7				17.92
TEQIP-II			200	300	300	800
IE Kolkata			0.75			0.75
BRNS			18.35			18.35
Total	33.54	46.32	386	318.2	300	1084.13

## Research Publications

Year	2009-10	2010-11	2011-12	2012-13	2013-14	Total
Int. Journal	13	13	28	31	47	132
Nat. Journal	12	4	7	3	4	30
Int. Conf.	36	32	58	47	44	217
Nat. Conf.	24	17	24	29	13	107
Total	85	66	117	110	108	486

WCE Received World Bank Funding under Technical Education Quality Improvement Program (TEQIP) in two Phases:

- TEQIP Phase-I (2004-08)
  - Completed – Grant Rs. 8.65 Crores.
- TEQIP Phase-II (2012-16)
  - Ongoing – Grant Rs. 12.5 Crores.

### Testing and Consultancy

Year	2009-10	2010-11	2011-12	2012-13	2013-14
Amount in Lacs	47.69	43.55	43.55	56.56	69.47

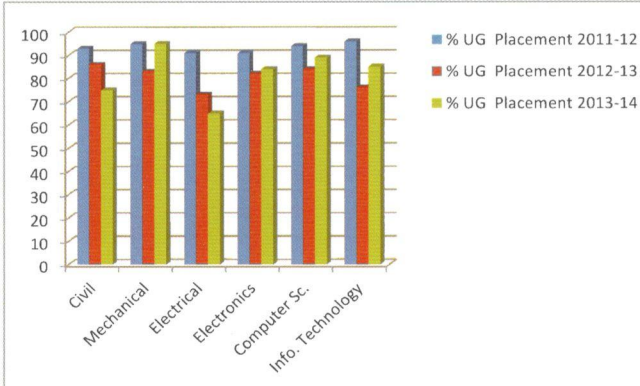
## Illustrious Faculty and Alumni

- Prof. A. V. Patki, Ex Director, ISRO, Bangalore
- Dr. R. A. Katti Ex Head, Thermal Systems, ISRO Bangalore
- Dr. S. D. Awale, Ex-VC, Dr. Ambedkar Tech. Univ., Lonere
- Dr. P. A. Kulkarni, Ex-VC, Sikkim-Manipal Univ., Sikkim
- Dr. M. G. Devmane, Ex. Director & Adisor, AICTE, New Delhi.
- Shri. V. S. Prabhu, Vice Chairman, BSES, Mumbai
- Shri. Adi Engineer, Vice Chairman, Tata Power, Mumbai
- Shri. Alim Chandani, Chairman, Stup Consultant, Mumbai
- Shri. Rajas Doshi, CMD, Indian Hume Pipes Ltd., Mumbai
- Shri. Vishwas Sapkal, Indian Ambassador to Armenia
- Shri. B. Raheja, Eminent, Builder, Mumbai.
- Dr. B. Subbarao, President, Environment Protection Research Foundation, Sangli.
- Dr. Shrikant Kulkarni, Ex Principal Systems Engineer, Aricent Group & Consultant to EU & US IT Companies

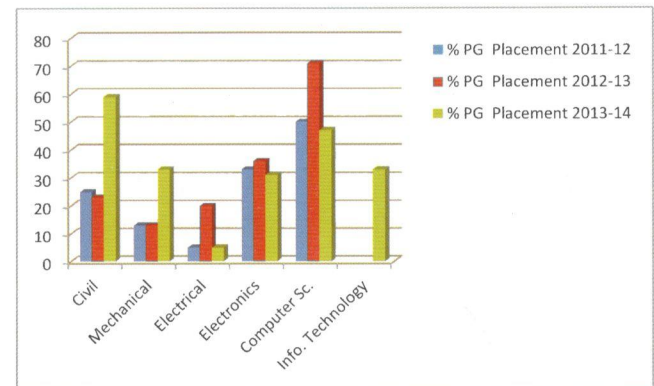


## WCE Placement in Last 3 Years

Branches	% UG Placement		
	2011-12	2012-13	2013-14
Civil	93	86	75
Mechanical	95	83	95
Electrical	91	73	65
Electronics	91	82	84
Computer Sc.	94	84	89
Info. Technology	96	76	85
<b>Overall</b>	<b>93</b>	<b>81</b>	<b>83</b>
No. of Cos visited:	61	58	64
Average Salary:	3.48	3.74	3.95
Maximum Salary:	8.00	11.00	12.00
Dream Offers:	222	59	81



Branches	% PG Placement		
	2011-12	2012-13	2013-14
Civil	25	23	59
Mechanical	13	13	33
Electrical	5	20	5
Electronics	33	36	31
Computer Sc.	50	71	47
Info. Technology			33



### 2014-15 (Till Dec, 2014)

Companies visited: 42; Dream offers: 200

- Placement: UG – 374/458 (81.65%); PG – 52/147 (34.66%);
- Wipro: 111; Accenture: 104; Infosys: 104; TCS: 54; TechMahindra : 39

## Our Recruiters







## Future Plans

### Create Centers of excellence in the areas

- CAD/CAM and PLM
- MEMS
- Mechatronics
- Embedded Systems
- VLSI
- Computational Fluid Dynamics
- Construction Materials and Machinery
- Structural Health Audit and Disaster Management
- Energy Studies (Non-conventional)
- Interaction with industries for academic excellence.
- Developing of Infrastructure/Equipment for creating Video facility.
- Networking through Video Conferencing.
- Enterprise Resource Planning.
- Knowledge sharing with other institutes.
- High speed Internet facility.
- Global Recognition.
- Deemed University.

## Master Plan 2020

This project is helping Walchand College of Engineering, update its campus master plan to meet international standards by upgrading its facilities and building on its strong existing framework, the college hopes to gain attention from associations with international universities for the world-class educational opportunities it offers in Sangli.

The master plan prepared by HOK features a series of phased implementation strategies for new development projects that won't interfere with the college's operations





# Student's Facilities







## Contacts

Walchand College of Engineering  
Sangli-Miraj Road, Vishrambag  
SANGLI (MS), INDIA 416416

Phone: +91-233-300383

Fax: +91-233-300831

Email: [director@walchandsangli.ac.in](mailto:director@walchandsangli.ac.in)

Web: [www.walchandsangli.ac.in](http://www.walchandsangli.ac.in)

